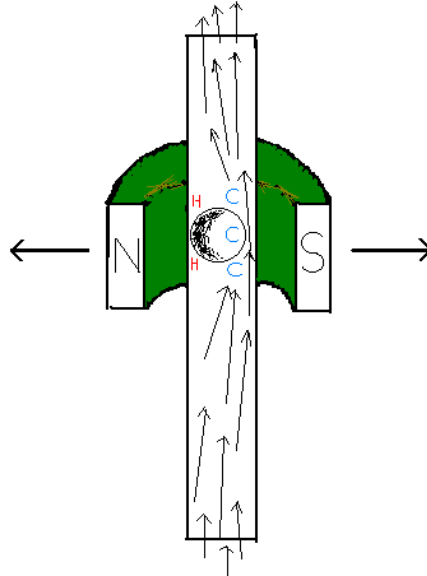


WR. 1228
The Writings of Prof. Bailey
Repulsion Energy,
2004

LETTER 12/28 "Pyro-magnetic Ball Bearing"
Jjb22

Pg. 01



Kim, this is the dangerous magnetized bearing experiment.

As you can see the bearing is suspended by magnetic force.

The internal air flow first forms a lift force on the North side of the magnetic pole and slams it into the the wall of the chimney pipe (copper tubing).

This de-magnetizes the bearing and sends it to the opposite magnetic pole. The tube makes a loud rattling noise and finally the bearing is propelled with great velocity out of the tube (gun like velocity, very dangerous!).

This experiment later became a patented generator. I was given this information years ago by Burt Pool of Keeynet association.

I only want you to understand that long before the bearing is pyromagnetic (some is from collision de-magnetization), it also is resonating from internal chimney effects or lift flow between the wall of the copper pipe and the ball bearing.

You first start the resonance by blowing wind up the pipe. The bearing should be mounted on a swing arm. Then only slowly do you introduce the magnetic force field....

